

FR

KIT D'ALÉSAGE

1/04 - 30/06/2026



SORMA | IT
INDEXABLE TOOLS - NIKKO

**Sélection d'outils et de
plaquettes pour l'alésage.
Chaque kit comprend 1 outil et
10 plaquettes.**

DORISE

 **SORMA**
DIAMOND & CUTTING TOOLS

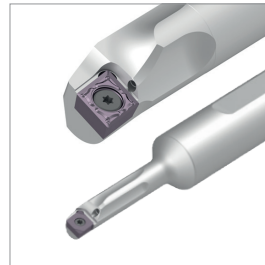
CARACTÉRISTIQUES ET AVANTAGES

Outils premium en carbure monobloc



- Porte-à-faux jusqu'à 7xD ;
- Excellente robustesse, brasage en forme de "V" ;
- Précision accrue et durée de vie de l'outil optimisée.

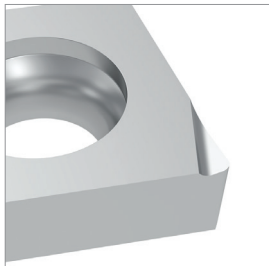
Outils antivibratoires Vortex



- Évacuation des copeaux optimisée ;
- Acier spécial antivibratoire, porte-à-faux jusqu'à 5xD ;
- Gamme complète avec arrosage interne.

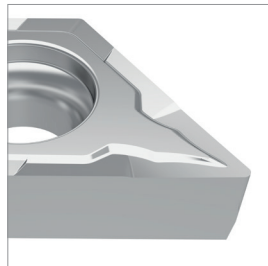
PPF (micro)

- Brise-copeau rectifié
- Coupe très douce



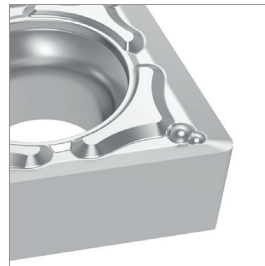
PPU (rectifié)

- Enlèvement de matière moyen
- Coupe continue/interrompue



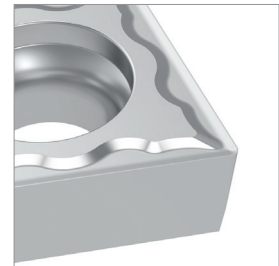
PFU (fritté)

- Coupe douce








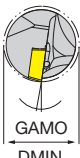


PMU (fritté)

- Usage général

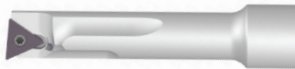








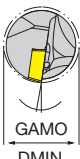

KIT D'ALÉSAGE MICRO

MCC+MD	 INTERNAL COOLANT 7xD	 GAMO DMIN	 Brise-copeau rectifié, super finition	
Code kit	1 pce barre en carbure	Dmin	10 pces MCC.R_	Prix du KIT
KIT-MCC-E01	NT-E04G-MICRO-CC-RH	5	MCC.R02L-PPF JP5125	€ 201,00
KIT-MCC-E02	NT-E04G-MICRO-CC-RH	5	MCC.R04L-PPF JP5125	€ 201,00
KIT-MCC-E03	NT-E05H-MICRO-CC-RH	6	MCC.R02L-PPF JP5125	€ 201,00
KIT-MCC-E04	NT-E05H-MICRO-CC-RH	6	MCC.R04L-PPF JP5125	€ 201,00



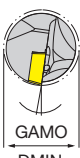


MCC+ Vortex	 INTERNAL COOLANT 5xD	 GAMO DMIN	 Brise-copeau rectifié, super finition	
Code kit	1 pce barre Vortex	Dmin	10 pces MCC.R_	Prix du KIT
KIT-MCC-V01	NT-V10H-MICRO-CC-RH-05	5	MCC.R02L-PPF JP5125	€ 176,90
KIT-MCC-V02	NT-V10H-MICRO-CC-RH-05	5	MCC.R04L-PPF JP5125	€ 176,90
KIT-MCC-V03	NT-V10H-MICRO-CC-RH-06	6	MCC.R02L-PPF JP5125	€ 176,90
KIT-MCC-V04	NT-V10H-MICRO-CC-RH-06	6	MCC.R04L-PPF JP5125	€ 176,90



KIT D'ALÉSAGE





TB+ Vortex	 		 Brise-copeau rectifié, super finition						
					Code kit	1 pce barre Vortex	Dmin	10 pces MCC.R_	Prix du KIT
					KIT-MTB-V01	NT-V10H-STLBR06-07	7	TBET060102L-PPF JP5125	€ 175,20
					KIT-MTB-V02	NT-V10H-STLBR06-07	7	TBET060104L-PPF JP5125	€ 175,20
					KIT-MTB-V03	NT-V10H-STLBR06-08	8	TBET060102L-PPF JP5125	€ 175,20
KIT-MTB-V04	NT-V10H-STLBR06-08	8	TBET060104L-PPF JP5125	€ 175,20					

WB+ Vortex	 		 Brise-copeau rectifié, super finition						
					Code kit	1 pce barre Vortex	Dmin	10 pces MCC.R_	Prix du KIT
					KIT-MWB-V01	NT-V10H-SWUBR06-06	6	WBET060102L-PPF JP5125	€ 175,20
					KIT-MWB-V02	NT-V10H-SWUBR06-06	6	WBET060104L-PPF JP5125	€ 175,20
					KIT-MWB-V03	NT-V10H-SWUBR06-07	7	WBET060102L-PPF JP5125	€ 175,20
KIT-MWB-V04	NT-V10H-SWUBR06-07	7	WBET060104L-PPF JP5125	€ 175,20					

D'ALÉSAGE APPLICATION GÉNÉRAL

CC06 + MD	 		 rectifié PPU - coupe continue/interrompue						
					Code kit	1 pce barre en carbure	Dmin	10 pces CC...060202-PPU	Prix du KIT
					KIT-PPU-E01	NT-E08K-SCLCL06	10	CCGT060202-PPU JP5125	€ 196,50
					KIT-PPU-E02	NT-E08K-SCLCR06	10	CCGT060202-PPU JP5125	€ 196,50
					KIT-PPU-E03	NT-E10K-SCLCL06	12	CCGT060202-PPU JP5125	€ 206,80
					KIT-PPU-E04	NT-E10K-SCLCR06	12	CCGT060202-PPU JP5125	€ 206,80
					KIT-PPU-E05	NT-E12M-SCLCL06	14	CCGT060202-PPU JP5125	€ 224,10
					KIT-PPU-E06	NT-E12M-SCLCR06	14	CCGT060202-PPU JP5125	€ 224,10
						1 pce barre en carbure		10 pces CC...060204-PPU	
					KIT-PPU-E07	NT-E08K-SCLCL06	10	CCGT060204-PPU JP5125	€ 196,50
					KIT-PPU-E08	NT-E08K-SCLCR06	10	CCGT060204-PPU JP5125	€ 196,50
					KIT-PPU-E09	NT-E10K-SCLCL06	12	CCGT060204-PPU JP5125	€ 206,80
					KIT-PPU-E10	NT-E10K-SCLCR06	12	CCGT060204-PPU JP5125	€ 206,80
KIT-PPU-E11	NT-E12M-SCLCL06	14	CCGT060204-PPU JP5125	€ 224,10					
KIT-PPU-E12	NT-E12M-SCLCR06	14	CCGT060204-PPU JP5125	€ 224,10					

			 fritté PFU - coupe douce PMU - universel	
Code kit	1 pce barre Vortex	Dmin	10 pces CC...060204-PFU	Prix du KIT
KIT-PFU-V01	NT-V08H-SCLCL06-10	10	CCMT060204-PFU JP5125	€ 117,00
KIT-PFU-V02	NT-V08H-SCLCR06-10	10	CCMT060204-PFU JP5125	€ 117,00
KIT-PFU-V03	NT-V10K-SCLCL06-12	12	CCMT060204-PFU JP5125	€ 120,70
KIT-PFU-V04	NT-V10K-SCLCR06-12	12	CCMT060204-PFU JP5125	€ 120,70
KIT-PFU-V05	NT-V12M-SCLCL06-14	14	CCMT060204-PFU JP5125	€ 132,10
KIT-PFU-V06	NT-V12M-SCLCR06-14	14	CCMT060204-PFU JP5125	€ 132,10
	1 pce barre Vortex		10 pces CC...060204-PMU	
KIT-PMU-V01	NT-V08H-SCLCL06-10	10	CCMT060204-PMU JP5125	€ 117,00
KIT-PMU-V02	NT-V08H-SCLCR06-10	10	CCMT060204-PMU JP5125	€ 117,00
KIT-PMU-V03	NT-V10K-SCLCL06-12	12	CCMT060204-PMU JP5125	€ 120,70
KIT-PMU-V04	NT-V10K-SCLCR06-12	12	CCMT060204-PMU JP5125	€ 120,70
KIT-PMU-V05	NT-V12M-SCLCL06-14	14	CCMT060204-PMU JP5125	€ 132,10
KIT-PMU-V06	NT-V12M-SCLCR06-14	14	CCMT060204-PMU JP5125	€ 132,10

			 fritté PFU - coupe douce PMU - universel	
Code kit	1 pce barre Vortex	Dmin	10 pces CC...090204-PFU	Prix du KIT
KIT-PFU-V07	NT-V12M-SCLCL09-14	14	CCMT09T304-PFU JP5125	€ 137,20
KIT-PFU-V08	NT-V12M-SCLCR09-14	14	CCMT09T304-PFU JP5125	€ 137,20
KIT-PFU-V09	NT-V16Q-SCLCL09-18	18	CCMT09T304-PFU JP5125	€ 155,70
KIT-PFU-V10	NT-V16Q-SCLCR09-18	18	CCMT09T304-PFU JP5125	€ 155,70
	1 pce barre Vortex		10 pces CC...090204-PMU	
KIT-PMU-V07	NT-V12M-SCLCL09-14	14	CCMT09T304-PMU JP5125	€ 137,20
KIT-PMU-V08	NT-V12M-SCLCR09-14	14	CCMT09T304-PMU JP5125	€ 137,20
KIT-PMU-V09	NT-V16Q-SCLCL09-18	18	CCMT09T304-PMU JP5125	€ 155,70
KIT-PMU-V10	NT-V16Q-SCLCR09-18	18	CCMT09T304-PMU JP5125	€ 155,70

DORISE



Sorma Bema France SAS / P.A.E. Les Lechères / 145 Rue du Nant / 74460 Marnaz / France
+33 0450558854 / cmd@bemafrance.com



SNKKITBAR-F